

# Research at the facility



# Fire in 2017



**2018**



# Research projects

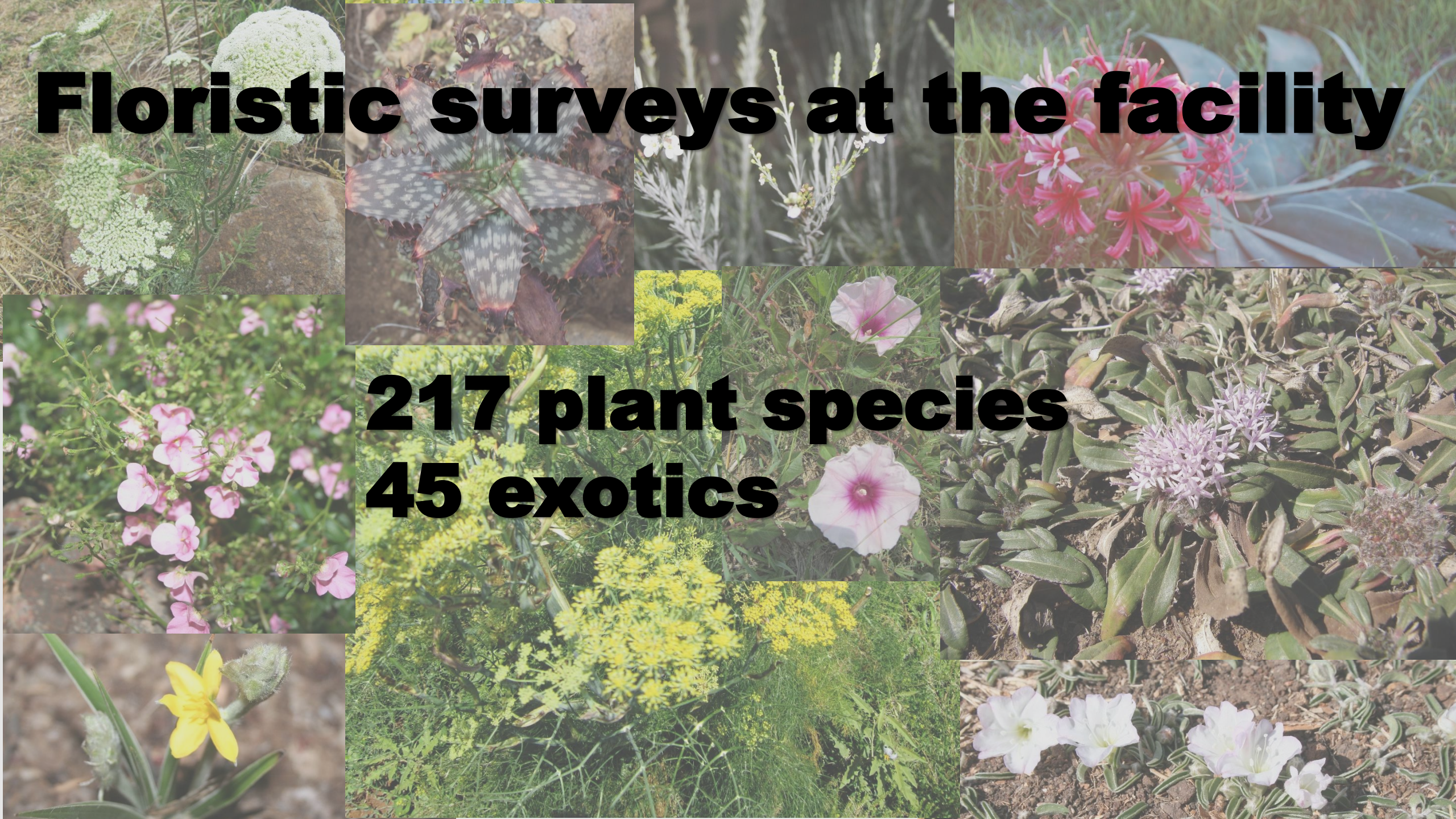


- **Water quality**
- **Groundwater bacteria**
- **Ecotoxicology**
- **Vegetation mapping and veld management**
- **Floristic surveys**



# Floristic surveys at the facility

217 plant species  
45 exotics



# **Small fragment of sensitive Dolomite grassland**



# **Training**

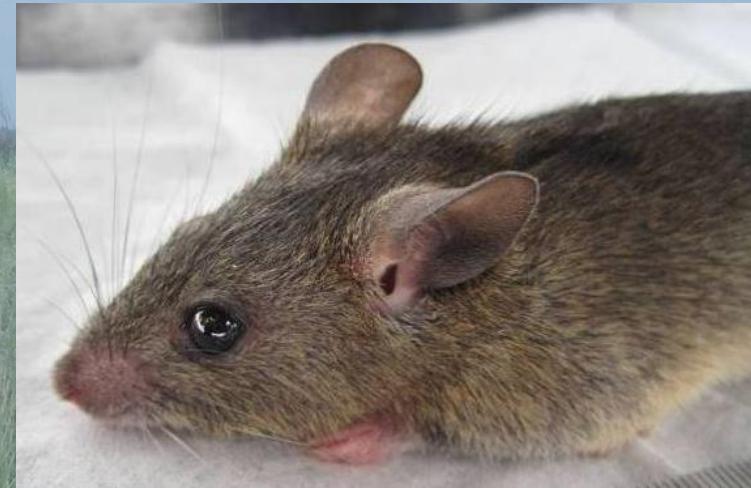
## **Zoology: Ecology 3<sup>rd</sup> year projects**





# Training

## Zoology: Ecology 3<sup>rd</sup> year projects



# Training

## Zoology: Ecology 3<sup>rd</sup> year projects



# **International workshop: May 2019**



**Improved  
understanding of  
ecosystem resilience  
through studying  
belowground plant  
organs**

# International workshop: May 2019



# **Research committee**

## **Fixed positions:**

- **UESM Research Director**
- **Senior Laboratory and Infrastructure Manager**
- **Committee chairperson**

# **Research committee**

## **Functions**

- **coordinate and facilitate all research activities on the property;**
- **to provide the needed support to researchers;**
- **to encourage interdisciplinary research at the facility;**
- **to establish long-term monitoring projects of international interest.**

# Research interest

- **Project registration**
- **Research proposal:**
  - **Short summary of proposed research**
  - **Summary of support**
    - **Data**
    - **Use of infrastructure etc.**

# Data portal

- Data will be deposited onto a facility database (with consent of researchers):
- Data that will be made available:
  - Weather data
  - Floristic data
  - Water monitoring data and more...



# Details on the webpage of the UESM



# Vegetation zones

<https://www.google.com/maps/d/viewer?mid=1n-t7q-0NmJ6q3mcilZxoPaWADwu0MSs3&ll=-26.490460576467996%2C27.13460209521486&z=17>

